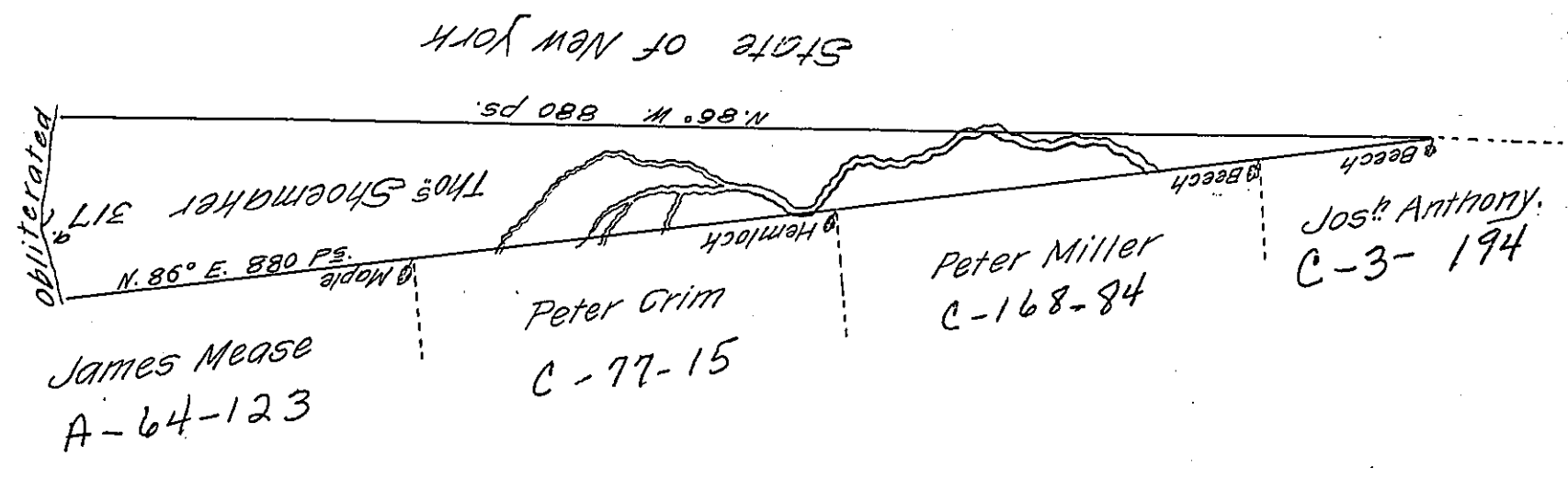


Page 224



A Draught of a tract of land called — situate on a branch of Choconut Creek joining land Survd for Henry Hill & others in Stoke Township North^d County. Containing Three Hundred & Seventeen acres & allowance of six $\frac{1}{2}$ Cent. for roads &c. Survd for Tho^s Shoemaker the 3^d day of August 1784. in pursuance of a warrant dated the 2^d day of ~~7~~ July 1784.

To John Lukrens Esqr. } by W^m Gray D.S.
 Survt. Genl.

IN TESTIMONY that the above is a copy of the original remaining on file in the Department of Internal Affairs of Pennsylvania, made conformably to an Act of Assembly approved the 16th day of February, 1833, I have hereunto set my Hand and caused the Seal of said Department to be affixed at Harrisburg, this second day of March 1908.

Newry Hower
 Secretary of Internal Affairs.